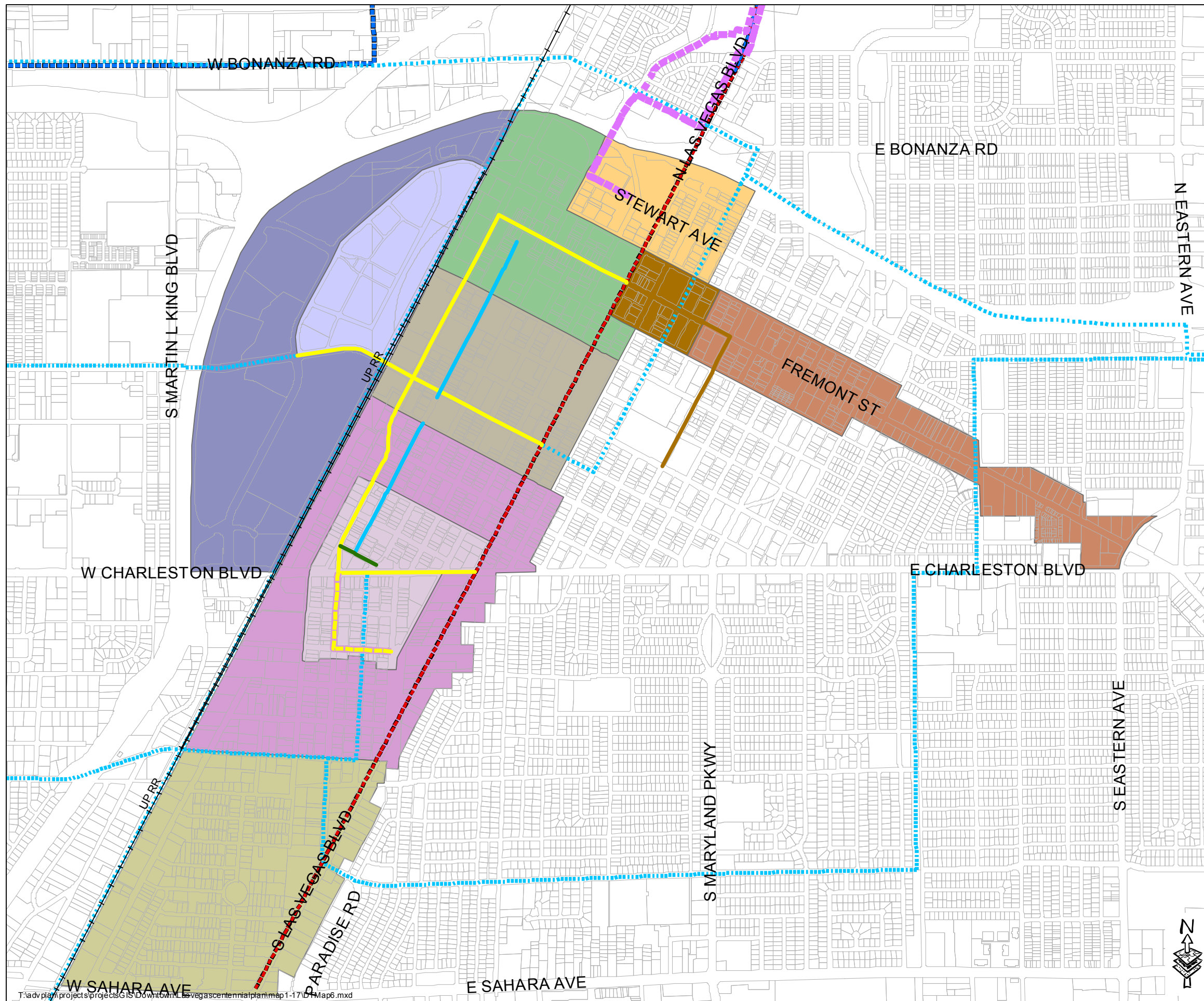






Map 6

Downtown Urban Pathways System



Downtown Trails

-  Pioneer Trail
-  Art Trail
-  Boulder Plaza
-  Entertainment Trail
-  Multi-Use, Transportation
-  Scenic Byway
-  Cultural Corridor Trail
-  Tortoise Trail

Downtown Districts

-  Office Core (117.39 Acres)
-  Downtown Gateway (59.52 Acres)
-  Downtown South (204.66 Acres)
-  18b Las Vegas Arts District (80.76 Acres)
-  Parkway Center (210.14 Acres)
-  Central Casino Core (107.55 Acres)
-  Northern Strip Gateway (206.68 Acres)
-  East Village (104.67 Acres)
-  Fremont East District (25.16 Acres)
-  Symphony Park (74.25 Acres)

Adopted: Ordinance #5238, July 5th, 2000
 Revised: GPA-2591, August 13th, 2003
 Revised: GPA-3130, November 5th, 2003
 Revised: Ordinance #5874, January 3rd, 2007
 Revised: GPA-32130, February 18, 2009
 Revised: Ordinance #6051, August 5, 2009
 Revised: Ordinance #6117, November 03, 2010



GIS maps are normally produced only to meet the needs of the City. Due to continuous development activity this map is for reference only.
 Geographic Information System
 Planning & Development Dept.
 702-229-6301



Plotted Date: November 29, 2010